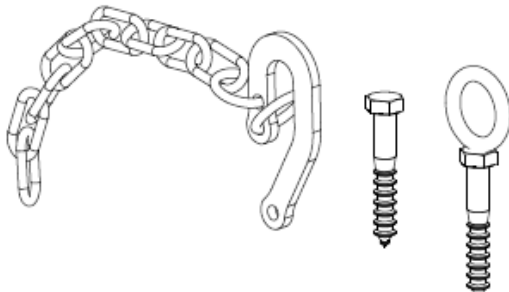
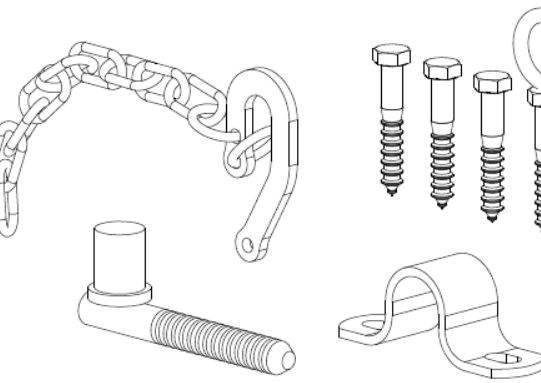
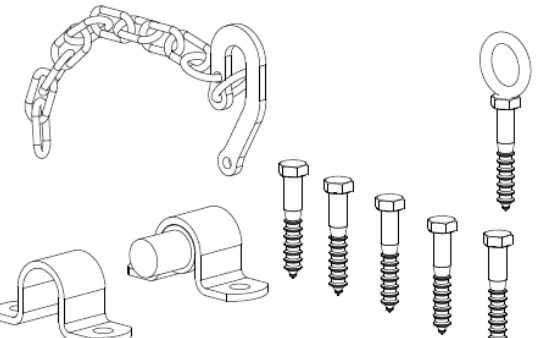
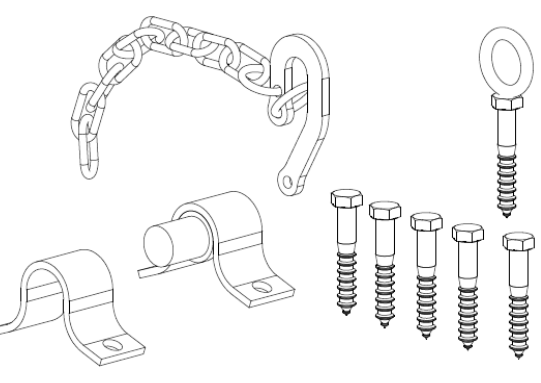
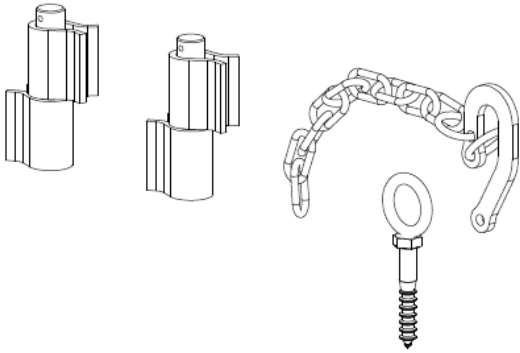


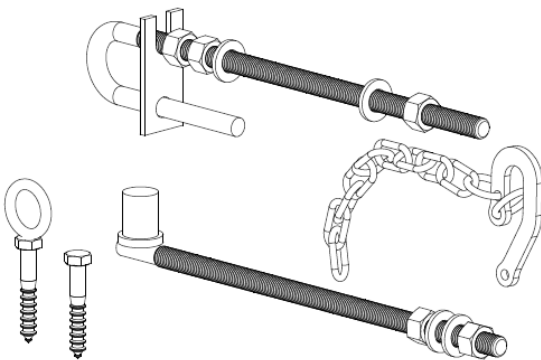


**SUPER FITTINGS**  
A U S T R A L I A

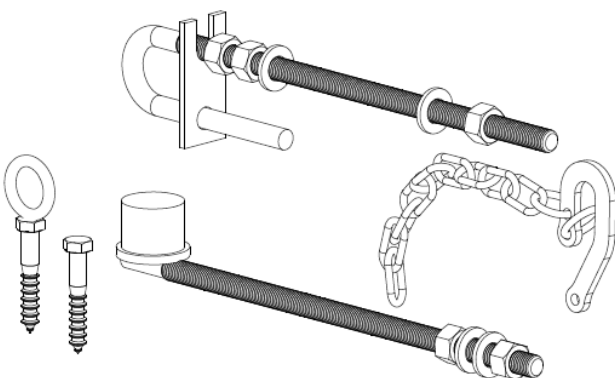
	<p><b>CODE:</b> <b>SFGP1</b>  <b>APPLICATION:</b> Farm gate Latch kit for both timber and zinc plated  <b>FINISH:</b> Zinc plated  <b>QTY / BOX:</b> 30</p>
	<p><b>CODE:</b> <b>SFGP2</b>  <b>APPLICATION:</b> Farm gate hinge kit to suit round or square timber posts  <b>FINISH:</b> Zinc plated  <b>QTY / BOX:</b> 15</p>
	<p><b>CODE:</b> <b>SFGP3</b>  <b>APPLICATION:</b> Farm gate hinge kit to suit round or square timber posts  <b>FINISH:</b> Zinc plated  <b>QTY / BOX:</b> 15</p>
	<p><b>CODE:</b> <b>SFGP4</b>  <b>APPLICATION:</b> Farm gate hinge kit to suit 100mm square timber and steel posts  <b>FINISH:</b> Zinc plated  <b>QTY / BOX:</b> 15</p>



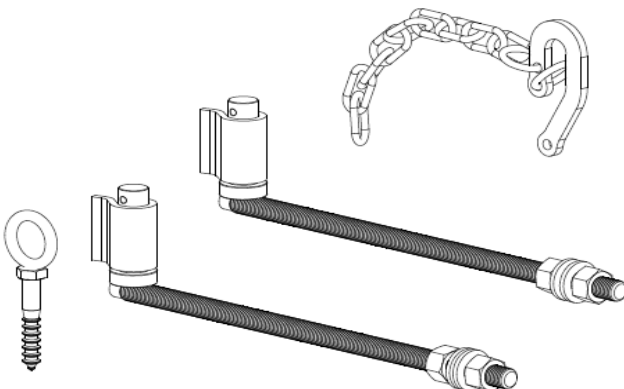
**CODE:** **SFGP5**  
**APPLICATION:** Farm gate hinge kit to suit steel posts both round and square (SWOP20 Hinges)  
**FINISH:** Zinc plated  
**QTY / BOX:** 10



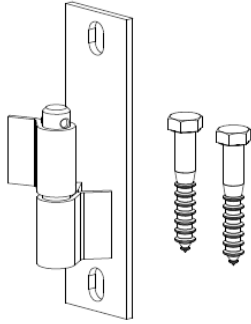
**CODE:** **SFGP6**  
**APPLICATION:** Farm gate hinge kit to suit timber posts, ideal for large gate openings where gate adjustment is necessary  
**FINISH:** Zinc plated  
**QTY / BOX:** 10



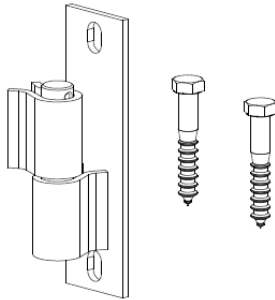
**CODE:** **SFGP7**  
**APPLICATION:** Heavy duty farm gate hinge kit to suit timber posts  
**FINISH:** Zinc plated  
**QTY / BOX:** 10



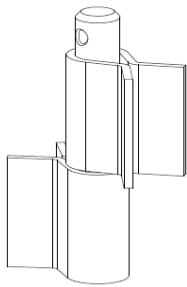
**CODE:** **SFGP8**  
**APPLICATION:** Farm gate hinge kit to suit timber and steel posts  
**FINISH:** Zinc plated  
**QTY / BOX:** 10



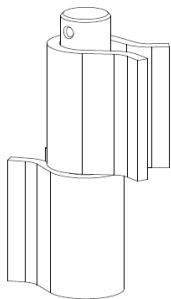
**CODE:** **SBOP16**  
**APPLICATION:** General purpose pin and socket hinge to suit steel or timber post and steel ramped gate  
**FINISH:** Zinc plated  
**QTY / BOX:** 25



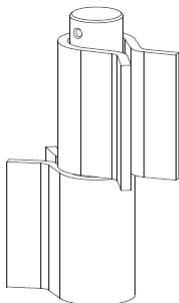
**CODE:** **SBOP20**  
**APPLICATION:** Heavy duty general purpose pin and socket hinge to suit steel or timber post and steel ramped gate  
**FINISH:** Zinc plated  
**QTY / BOX:** 20



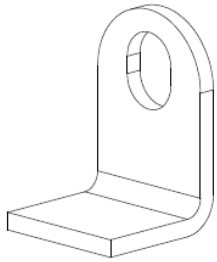
**CODE:** **SWOP16**  
**APPLICATION:** General purpose weld on hinges  
**FINISH:** Zinc plated  
**QTY / BOX:** 50



**CODE:** **SWOP20**  
**APPLICATION:** General purpose weld on hinges  
**FINISH:** Zinc plated  
**QTY / BOX:** 25



**CODE:** **SWOP27**  
**APPLICATION:** General purpose weld on hinges  
**FINISH:** Zinc plated  
**QTY / BOX:** 16

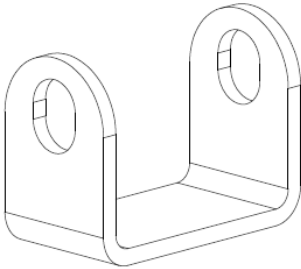


**CODE:** **CATLUGB (5.0mm)**

**APPLICATION:** Male lug for cattle panels

**FINISH:** Zinc plated

**QTY / BOX:** 100

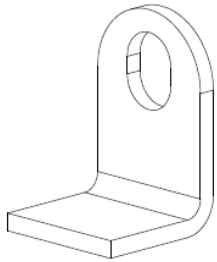


**CODE:** **CATLUGD (5.0mm)**

**APPLICATION:** Female lug for cattle panels

**FINISH:** Zinc plated

**QTY / BOX:** 100

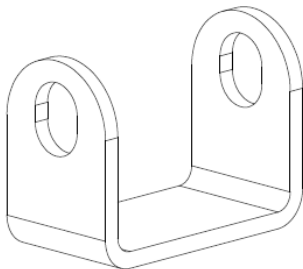


**CODE:** **CATLUGB8 (8.0mm)**

**APPLICATION:** Male lug for cattle panels

**FINISH:** Zinc plated

**QTY / BOX:** 100

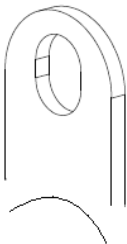


**CODE:** **CATLUGD8 (8.0mm)**

**APPLICATION:** Female lug for cattle panels

**FINISH:** Zinc plated

**QTY / BOX:** 100



**CODE:** **CATLUGC (5.0mm)**

**APPLICATION:** Curved lug for Pipe style cattle panels

**FINISH:** Zinc plated

**QTY / BOX:** 100



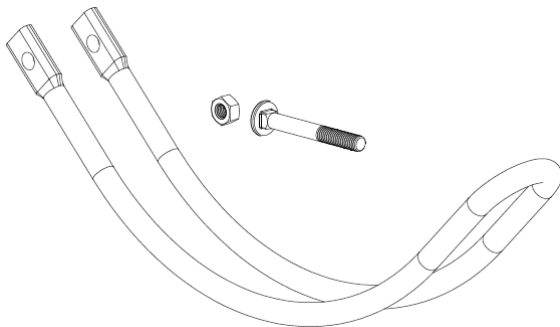
*CODE:* **CATPIN12**  
*APPLICATION:* 12mm cattle yard pin  
*FINISH:* Zinc plated  
*QTY / BOX:* 20



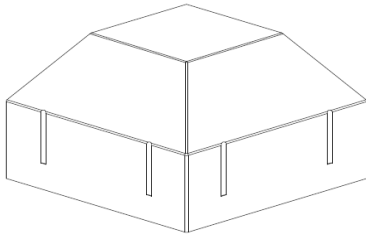
*CODE:* **CATPIN14**  
*APPLICATION:* 14mm cattle yard pin  
*FINISH:* zinc plated  
*QTY / BOX:* 20



*CODE:* **CATPIN16**  
*APPLICATION:* 16mm cattle yard pin  
*FINISH:* Zinc plated  
*QTY / BOX:* 20

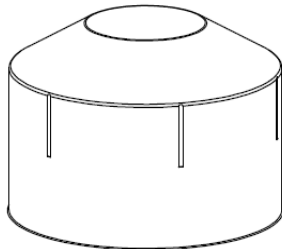


*CODE:* **SFGB1**  
*APPLICATION:* Farm gate bow latch, suit  
25NB farm gates  
requiring securing in the  
middle (not stock proof)  
*FINISH:* Zinc plated  
*QTY / BOX:* 10



## SQUARE POST CAPS - GALVANISED

Code	RHS	QTY/BOX
C2525	25x25	500
C3030	30x30	500
C3535	35x35	500
C4040	40x40	250
C5050	50x50	250
C6565	65x65	125
C7575	75x75	100
C9090	90x90	50
C100100	100x100	50
C125125	125x125	25
C150150	150x150	25



## ROUND POST CAPS - GALVANISED

Code	PIPE SIZE	QTY/BOX
C16	16OD	2500
C19	19OD	2500
C20	20NB	500
C25	25NB	500
C32	32NB	250
C40	40NB	250
C50	50NB	250
C65	65NB	125
C80	80NB	100
C90	90NB	50
C100	100NB	50
C125	125NB	25
C150	150NB	25